

How To Install Your LCD Screen

iPod Video



PLEASE PRINT OUT A COPY OF THE MANUAL BEFORE INSTALLATION

For Customer Service and Technical Support
email: support6@fastmac.com or phone: 408.850.6232



Thank you for choosing FastMac. Please feel free to contact us at any time with any questions or comments you may have while installing your LCD Screen. Let's begin.



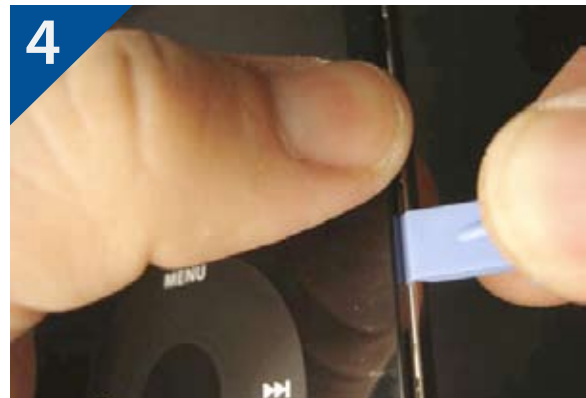
1. Lay out the tools provide in the packaging.



2. Press and hold the play/pause button to place the iPod in sleep mode. Locate the hold switch on top of the iPod and turn to the on (orange) position.

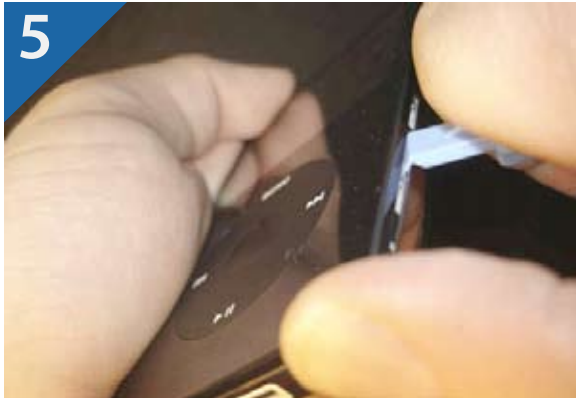


3. Begin by holding the iPod in your left hand. While pressing down with your thumbs, pull the bottom case firmly to the opposite direction. This will cause a slight gap to appear between the metal backing and the acrylic top case.



4. Insert the edge of the larger tool into the gap you've created.

Stage 2: Removing Hard Drive



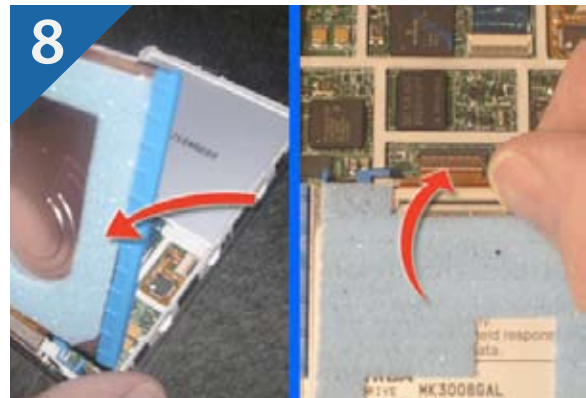
5. Using your thumb as an anchor, slowly work your way around the edges of the iPod while pressing in slightly.



6. Be careful when using the plastic tool around the top and bottom of the iPod. These areas contact very delicate components.



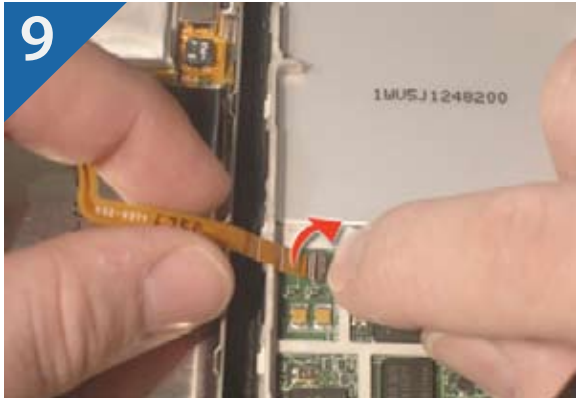
7. Once the backing has been released, turn the iPod over and very gently lift up on the right hand side to reveal the battery connector. Using the flat-bladed screwdriver, carefully lift the locking ring slightly to disconnect the battery ribbon cable.



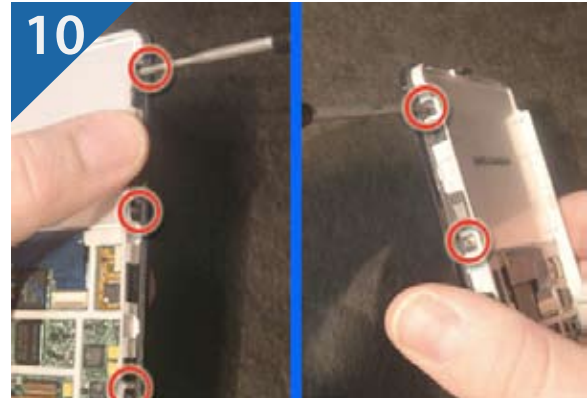
8. Lay the backing over and set the iPod down. Gently lift up on the hard drive and lay it over as shown in the picture. Detach the cable by first lifting up gently on the brown lever. Very carefully, wiggle the hard drive loose from the cable. Set the hard drive aside.

Disclaimer: Be extremely careful at this stage. you can easily break the connector off of the logic board.

Stage 3 Removing Old LCD Screen



9. Locate the second ribbon cable connecting the back case to the logic board. Lift up gently on the small lever closest to the ribbon cable side and slide the cable out. Set the back case aside.



10. Remove the 6 small Philip's screws (3 on each side) from the main unit.



11. Locate the LCD ribbon cable. Gently lift up on the brown colored lever.



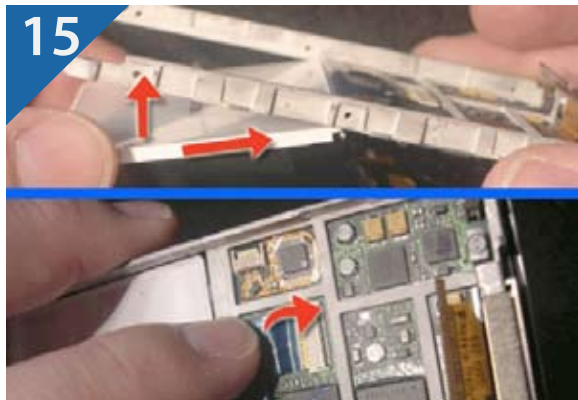
12. Gently insert a small flat-head screwdriver between the black plastic tabs of the faceplate and the internal metal housing. Pry very gently and very slowly on each tab to release the faceplate. You must do this on both sides of the iPod, with 3 tabs on each side. .



13. Lift the internal metal housing gently away from the plastic faceplate. Be careful! The track pad is still attached along with the small select button. This button can be easily lost, so keep the iPod oriented as shown in the picture. Slide the LCD out gently in the direction of the arrows. You might need to wiggle the LCD slightly to remove the cable from the logic board. Set the two items aside.



14. Remove the new LCD from its packaging. Carefully remove the protective sheeting from the front of the LCD module.



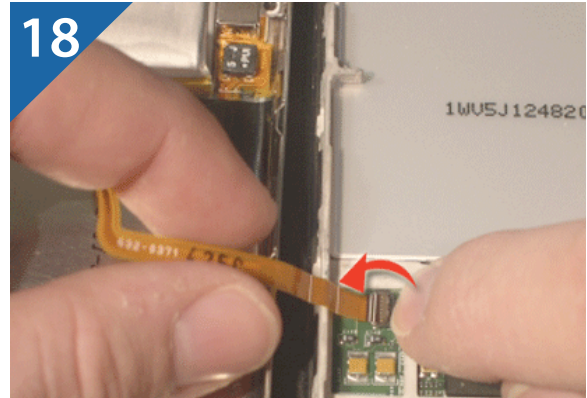
15. Orient the iPod as shown in the picture and slide it in the direction of the arrows. (Arrows showing direction Carefully reinsert the ribbon cable back into the connector on the logic board and lock it down. Just in case you have problems fitting the LCD into place; there are two small tabs that you need to guide back into place.



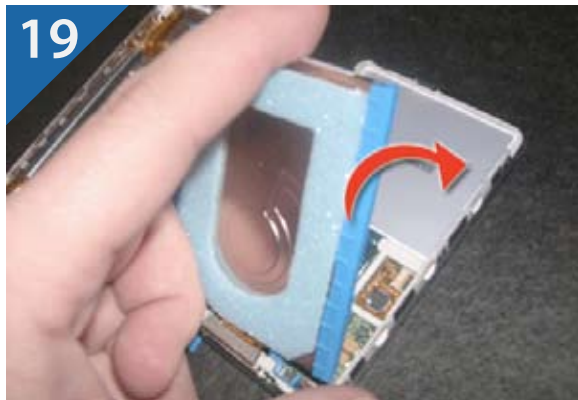
16. Reattach the hard drive by carefully inserting the ribbon cable as shown in the picture. Close the locking lever to secure the cable.



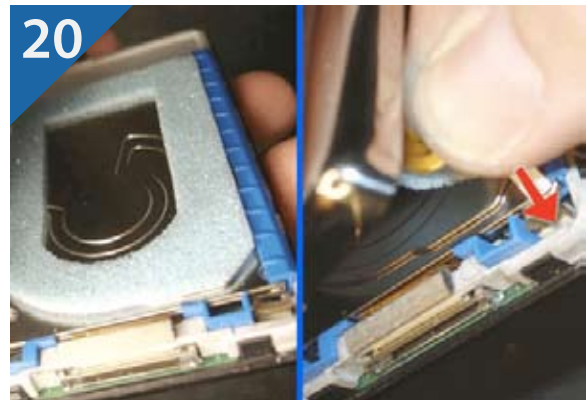
17. Carefully snap the faceplate back into place. Reattach all six screws.



18. Reinsert the ribbon cable back into the logic board. Close the locking lever (towards the ribbon cable)



19. Lay the hard drive back over into the chassis.



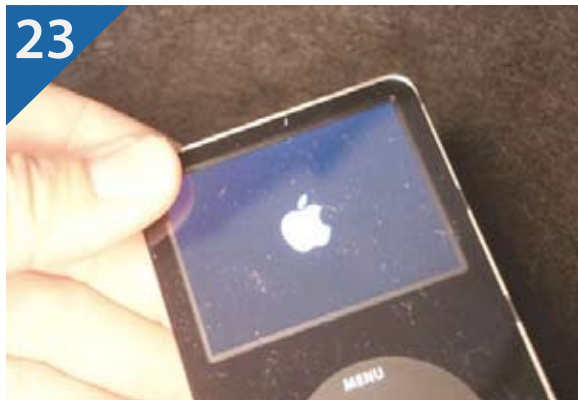
20. Carefully place the metal backing over the iPod and re-insert the battery ribbon cable. Be sure and lock the connector down. If the connector is already locked down, you will need to remove it again as in step 7.



21. Begin carefully, but firmly re-seating the metal backing by pressing down on the edges of the iPod. **DO NOT PRESS DOWN ON THE MIDDLE OR NEAR THE CENTER. THIS CAN CAUSE PERMANENT DAMAGE TO THE HARD DRIVE!**



22. Work your way around the entire iPod to ensure there are no gaps.



23. Turn the hold switch off and power on the iPod. You're done!

Thank You For Choosing FastMac.

iPod Video



Visit FastMac.com For More Products!